

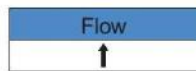
MODEL : FV-301 Cast Iron [Flange Foot Valve]

Connection : Flange JIS 10K



VTV VALVE, serving Multi-National end users in a wide range of applications in many industries including:

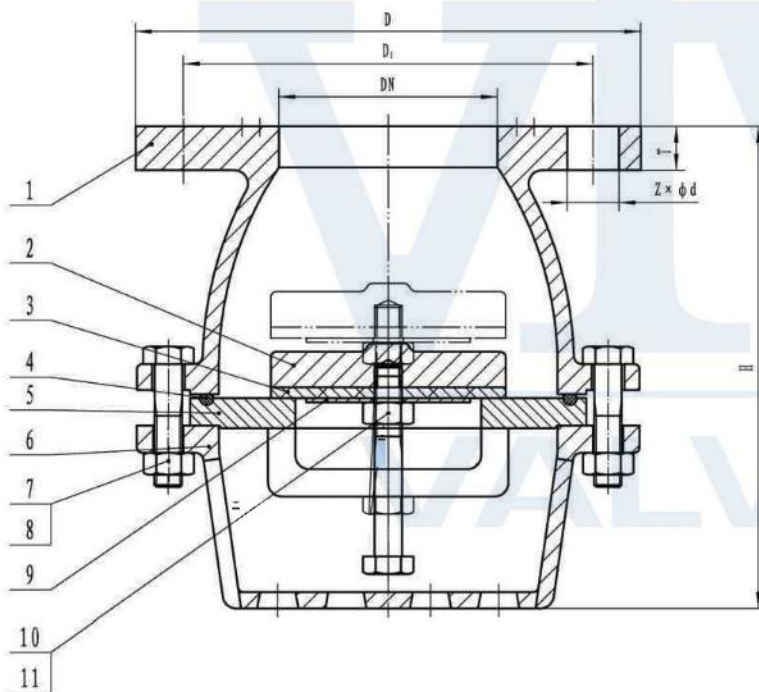
1. Palm Oil and Refinery Plant
2. Petrochemical
3. Water Treatment Plant
4. Cooling System



- ◆ **Suitable for :**
1. Water
 2. Oil
 3. Non-abrasive media

◆ **DESCRIPTION**

-Working Temperature : $\leq 150^{\circ}\text{C}$
 -Flange Dimensions : DIN 2532/2533
 other flange standard available.
 available for the without valve seal plate type also.



◆ **MATERIAL LIST**

No	NAME OF PARTS	MATERIAL
1	BODY	FC200
2	DISC	FC200
3	SEAL GASKET	NBR
4	O-RING	NBR
5	SEAT	FC200
6	COVER	FC200
7	BOLT	UNC
8	NUT	UNC
9	GASKET	Q235
10	NUT	UNC
11	BOLT	UNC

◆ **DIMENSIONS (mm)**

DN	DN	D1	Z— Φ d	H	T	KG
50	155	230	4— Φ 19	162	14	5.13
65	175	140	4— Φ 19	167	14	6.07
80	185	150	8— Φ 19	177	16	7.5
100	210	175	8— Φ 19	206	18	10.6
125	250	210	8— Φ 23	256	20	18.4
150	280	240	8— Φ 23	302	20	26.17

MODEL : FV-301 Stainless Steel [Flange Foot Valve]

Connection : Flange JIS 10K



VTV VALVE, serving Multi-National end users in a wide range of applications in many industries including:

1. Palm Oil and Refinery Plant
2. Petrochemical
3. Water Treatment Plant
4. Cooling System



- ◆ **Suitable for :** 1. Water
- 2. Sewage
- 3. Oil

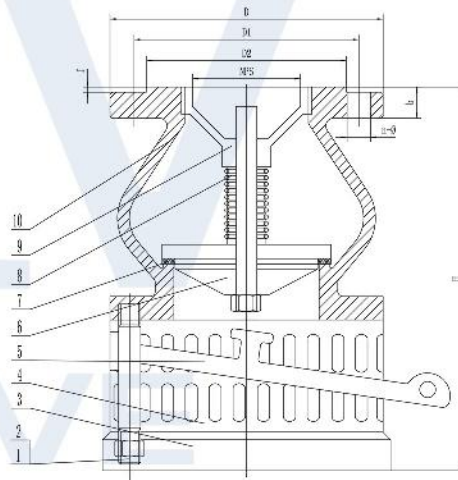
◆ Description

Test Pressure : Shell 0.98 Mpa
 Seat 0-0.98 Mpa
 Work Temperature : ≤ 175°C

The foot valve is a kind of valve which saves sources, usually assembled at the bottom of pump underwater sucker, it obstructs the liquid that in the tube of pump goes back to the waterhead, the function is entry but no out.

◆ MATERIAL LIST

No.	Parts	Material
1	Bolt	A193 B8
2	Nut	A194 8
3	Chassis	A351 CF8
4	Strainer	SS304
5	Wash the rod	A351 CF8
6	Disc	A351 CF8
7	Seat	EPDM
8	Spring	SS304
9	Guide Frame	A351 CF8
10	Body	A351 CF8



◆ DIMENSIONS (mm)

NPS	D	D1	D2	b-f	n—Φ	H	Kg
2"	155	120	96	16-2	4-19	210	6.5
2 1/2"	175	140	116	18-2	4-19	210	7.4
3"	185	150	126	18-2	8-19	215	9.5
4"	210	175	151	18-2	8-19	235	13.5
5"	250	210	182	20-2	8-23	260	18.5
6"	280	240	212	22-2	8-23	277	28
8"	330	290	262	22-2	12-23	350	38.5